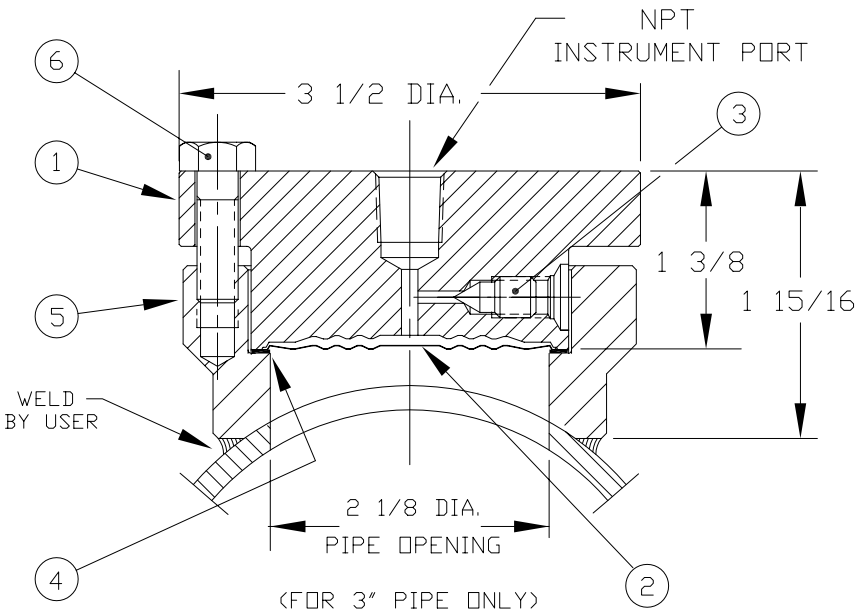


SOLD TO : ULTIMATE CUSTOMER : (IF AVAILABLE)		P.O. # : P.O. # :
AMETEK NO. :	DRW. TO :	CUST. SPEC. NO. :
ORDER ITEM NO. :	QUANTITY :	FILL FLUID :



DESCRIPTION	QTY.
① TOP	1
② DIAPHRAGM	1
③ FILLING SCREW	1
④ GASKET	1
⑤ BOTTOM	1
⑥ SCREW, 5/16-18 HEX. HD. CAP SCR. 8 (OPTIONAL 16 SCREWS FOR EXTRA BOLTING)	8


(FOR 3" PIPE ONLY)
1500 PSI @ 100° F.
OPTIONAL 3000 PSI @ 100° F

TYPE SJ-3 INSTRUMENT DESCRIPTION

- INSTALLATION :
- CUT OR BURNDOUT A 2 1/8" DIA. HOLE IN PIPE.
 - WELD BOTTOM PART #5 IN POSITION. MAKING MULTIPLE PASS WELDS WITH A BLANK TOP INSERTED IN THE OPENING.
 - INSTALL GASKET PART #4, AND CALIBRATED UNIT (PART #'S 1, 2, & 3) IN PLACE.
 - SECURE WITH SCREWS PART #6. TORQUE TO 20-25 FT. LBS. IN AN ALTERNATING PATTERN.
- OPERATION :
- WHEN CLEANING IS REQUIRED REMOVE SCREWS PART #6, CALIBRATED UNIT AND GASKET PART #4.
 - CLEAN AND REINSTALL - USING NEW GASKET.
- CAUTION :
- DO NOT LOOSEN INSTRUMENT OR FILLING SCREW PART #3, AS LOSS OF LIQUID FILL WILL RESULT AND RECALIBRATION WILL BE NECESSARY.
- OPTIONAL:
- BLANK TOP (#1 TOP WITHOUT DIAPHRAGM) MADE OF SS CAN BE SEPARATELY SUPPLIED BY VENDOR FOR CUSTOMER TO FIELD WELD #5 BOTTOM TO PIPING.

DRAWING CERTIFIED CORRECT,
DATE :

AMETEK

	AMETEK					TEST AND CALIBRATION INSTRUMENTS DIVISION		LARGO, FL
	CODE IDENT. NO. 92456	REVISION DATE	A 11-18-91	B 09-28-94	C 06/03/97	D 05/19/98	AMETEK DIAPHRAGM SEAL TYPE SJ DATA AND INSTRUCTION SHEET DRAWING NO. : SK-5208	